

CLAMPBEE®



AUTOMOTIVE SUPPORT STAND

MODEL NO: CTS4000B

PART NO: 7600200

INSTRUCTIONS

CE

GC0220 - ISS 4

SAFETY WARNINGS - ALWAYS READ BEFORE USE

1. Read these instructions carefully before use.
2. ALWAYS inspect before each use, to ensure the frame is not bent or twisted and that there are no cracked welds etc. Should any damage be apparent, or if the stand has been subjected to an abnormal shock, it should be removed from service and repaired by a qualified technician.
3. DO NOT use this tool as a jack.
4. DO NOT use this stand to support a vehicle transmission.
5. Do not exceed the stand's maximum load (750kg).
6. Use only as specified in this manual.
7. NEVER let children play around the stand.
8. Replace the safety warning label if it becomes unreadable.
9. For your safety, do not modify this stand in any way.

USING THE SUPPORT STAND



WARNING: BEFORE USE, MAKE SURE THAT THERE IS NO DAMAGE TO ANY PART OF THE STAND. IF THERE IS, DO NOT USE.

WARNING: IT MUST BE ENSURED THAT THE LOAD IS CAREFULLY LOCATED ONTO THE CENTRE OF THE STAND SADDLE. FAILURE TO DO THIS CAN RESULT IN DAMAGE TO THE STAND, LOSS OF SUPPORT TO THE LOAD, SERIOUS PERSONAL INJURY OR LOSS OF LIFE.

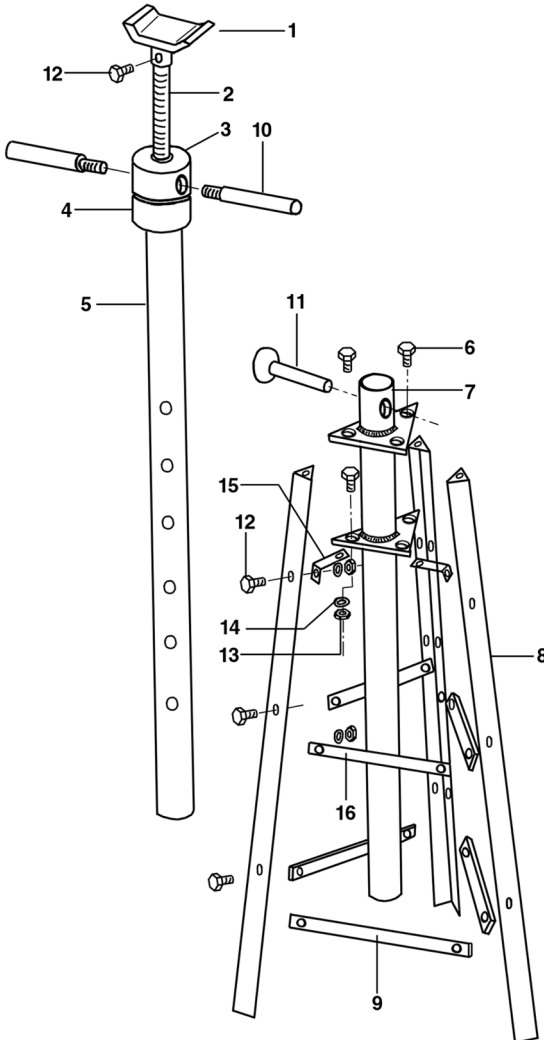
WARNING: DO NOT EXCEED THE RATED LOAD.

WARNING: USE ONLY ON A HARD, FLAT SURFACE, E.G. CONCRETE.

This Support Stand is designed for many support uses e.g. exhausts, and requires assembling according to the drawing opposite.

1. Rotate the Screw Nut (3), anticlockwise, using the handles (10), to lower the Saddle (1), as far as possible.
2. Grasp one of the handles (10), and taking the weight of the complete Upper Assembly Saddle, Screw Rod (2), Screw Nut, Handles and Tube Insert (5), remove the Locking Pin (11), which secures the Upper Assembly to the Support Post (7).
3. Raise the Upper Assembly as high as necessary so that the Saddle is as near as possible to the load.

4. Line up one of the holes in the Tube Insert (5) with the hole in the top of the Support Post and locate using the Locking Pin.
5. Finally, screw the Screw Nut clockwise so that the Saddle contacts the load at a suitable support point...careless positioning could result in damage to the load. Continue to raise the saddle, but only enough to take the weight of the load.



Ref No	Description
1	Saddle
2	Screw Rod
3	Screw Nut
4	Bearing
5	Tube Insert
6	Bolt M10 x 25
7	Support Post
8	Leg
9	Lower Strut
10	Handle
11	Locking Pin
12	Bolt M10 x 20
13	Nut M10
14	Flat Washer
15	Connecting Plate
16	Upper Strut

MAINTENANCE

The screw thread should be greased occasionally with a medium grease. In addition to a visual inspection before each use, the stand should be inspected by a qualified technician annually to ensure it is completely safe for use, with no distortion or damage of any kind.

GUARANTEE

This product is guaranteed against faulty manufacture for a period of 12 months from the date of purchase. Please keep your receipt which will be required as proof of purchase.

This guarantee is invalid if the product is found to have been abused or tampered with in any way, or not used for its intended purpose.

Faulty goods should be returned to their place of purchase, no product can be returned to us without prior permission. This guarantee does not effect your statutory rights.

SPECIFICATION

Maximum Height	2360 mm
Minimum Height	1255 mm
Maximum Load	750 kg
Product Weight	22 kg
Base dimensions	650 x 563 mm

DECLARATION OF CONFORMITY

	 Hemnal Street, Epping, Essex CM16 4LG
DECLARATION OF CONFORMITY	
This is an important document and should be retained.	
We hereby declare that this product(s) complies with the following directive(s):	
<i>2006/42/EC Machinery Directive.</i>	
The following standards have been applied to the product(s):	
The technical documentation required to demonstrate that the product(s) meet(s) the requirement(s) of the aforementioned directive(s) has been compiled and is available for inspection by the relevant enforcement authorities.	
The CE mark was first applied in: 2012	
Product Description:	Automotive Support Stand
Model number(s):	CTS4000B
Serial / batch Number:	N/A
Date of issue:	3/01/2020
Signed:	
	J.A. Clarke Director

CTS4000 Automotive stand DOC(rv2) Page 1 of 1